



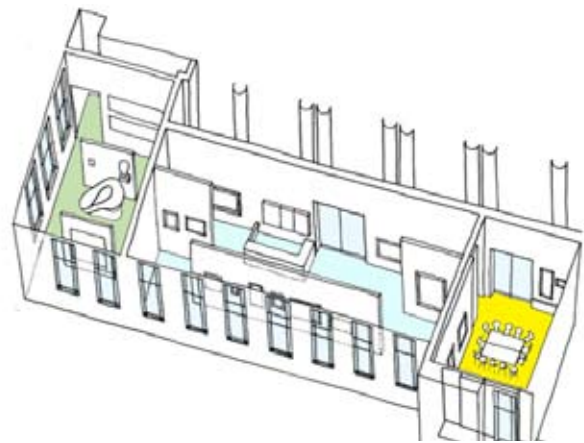
THE STANLEY AND AUDREY BURTON GALLERY, UNIVERSITY OF LEEDS, LEEDS

The Stanley & Audrey Burton Gallery is situated in the Parkinson Building at Leeds University. Formerly the Leeds University Art Gallery, the refurbishment and extension of the existing Gallery was made possible by a bequest from Stanley and Audrey Burton. The Parkinson Building is listed Grade II, and is a major landmark on the Leeds skyline, providing the University with a distinctive physical presence in the City. The Gallery is situated off the main Parkinson Court, at the heart of the student social hub.

Pringle Richards Sharratt were appointed as architects following a competitive interview process in September 2006.

The Gallery now provides a more visible presence and a more welcoming introduction to the collection, and can be seen clearly from the Parkinson Court. The permanent exhibition space has been vastly increased in size allowing more of the collection to be on permanent display, and the existing windows have been unblocked, and provided with shutters allowing the provision of controlled daylight to the space.

The gallery now has a separate education area with accessible storage, enabling students to handle and study drawings from the collection. A special exhibitions gallery opens off the permanent gallery, giving the university an opportunity to mount an ambitious programme of temporary exhibitions. New environmental controls have been provided for the galleries, providing a more stable environment for the display of art works.



University of Leeds
 £850,000
 300m²
 2006 - 2008